



GEARHEADS(ULTRA POWERFUL TYPE) Frame size 90mm sq. (3.54 in. sq.)

BALL BEARING TYPE

RATED TORQUE OF GEARHEAD

MODEL	Speed(rpm)	500	300	200	120	100	60	50	30	20	15	10	9	6	5	3	2	1
	Ratio	50Hz	3	5	7.5	12.5	15	25	30	50	75	100	150	166.7	250	300	500	750
	60Hz	3.6	6	9	15	18	30	36	60	90	120	180	200	300	360	600	900	1800
L9UK□B L9V10D(DECIMAL)	kg-cm	36.5	60.8	91.1	136.9	164.3	247.5	297	300	300	300	300	300	300	300	300	300	300
	N-m	3.57	5.95	8.93	13.41	16.10	24.26	29.11	29.40	29.40	29.40	29.40	29.40	29.40	29.40	29.40	29.40	29.40
	oz-in	506	844	1265	1901	2281	3437	4124	4166	4166	4166	4166	4166	4166	4166	4166	4166	4166

With Decimal Gearhead

- * The normal torque is that the motor and gearhead are directly coupled.
- * Insert the denominator of reduction ratio in □ of gearhead model name.
- * Actual rotation speed is 2~15% less than synchronous speed.
- * Color indicates that the rotation of gearhead shaft is in opposite direction as output shaft of motor.

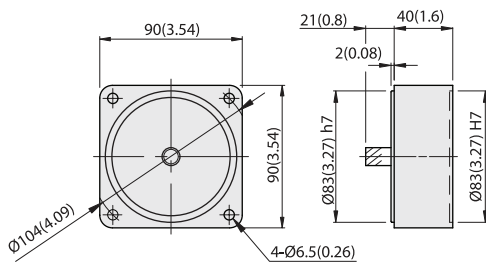
INDUCTION MOTORS

DIMENSIONS

Unit : mm(inch)

DECIMAL GEARHEAD

L9V10D

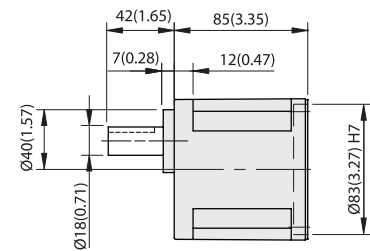
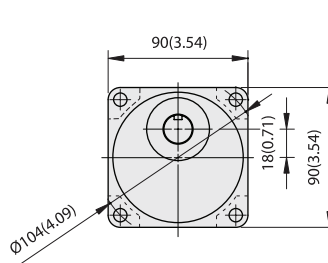


WEIGHT 0.6kg (1.3 lb)

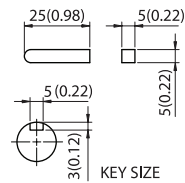


GEARHEAD

L9UK□B



MODEL	GEAR RATIO	WEIGHT		BOLT
		kg	lb	
L9UK□B	1/3~1/200	1.95	4.3	M6xL20



KEY SIZE

